



Co-funded by
the European Union

Computer Applications

Basic Charts in Microsoft Excel

Dragana Radosavljević
UPKM



UNIVERSITY OF LJUBLJANA
Faculty of Electrical Engineering



University of Pristina
Kosovska Mitrovica



Basic Charts

- Data visualization
- Basic chart types (Column, Line, Pie, Bar)
- First steps
 - selecting data
 - inserting a chart



Basic Charts

Charts allow us to:

- quickly spot trends and comparisons
- visually present relationships (growth/decline, distribution, etc.)
- explain results more easily to a “non-technical” audience
- highlight key values (minimum/maximum, peak in a series, etc.)



Basic Charts

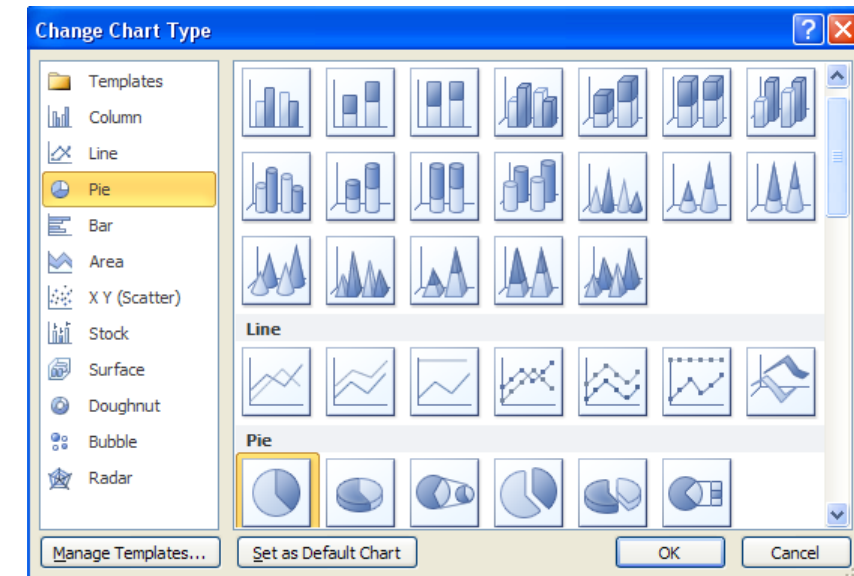
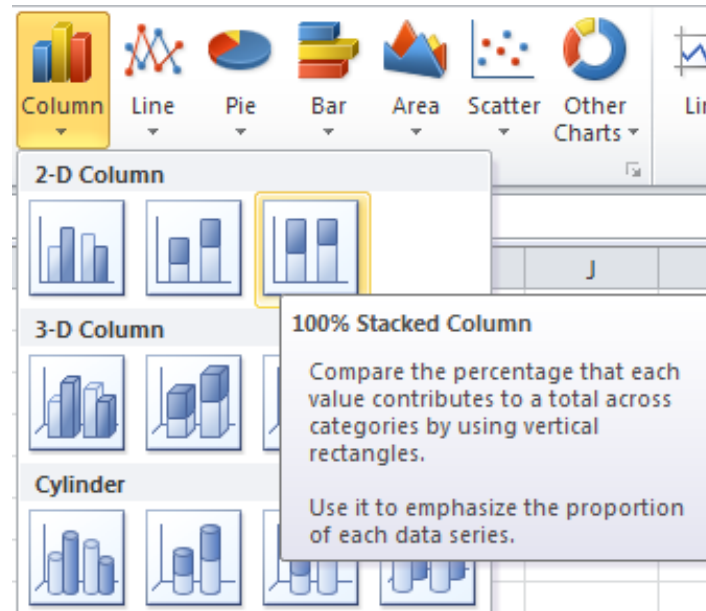
- Data should be in a clear table
 - first row – headers (e.g. “Month”, “Units Sold”)
 - each column – one data type
 - each row – one “observation” (e.g. one month/item/student)
- No empty rows/columns inside the table
- Values shown in the chart must be numbers
 - not “10 pieces”, but just 10



Basic Charts

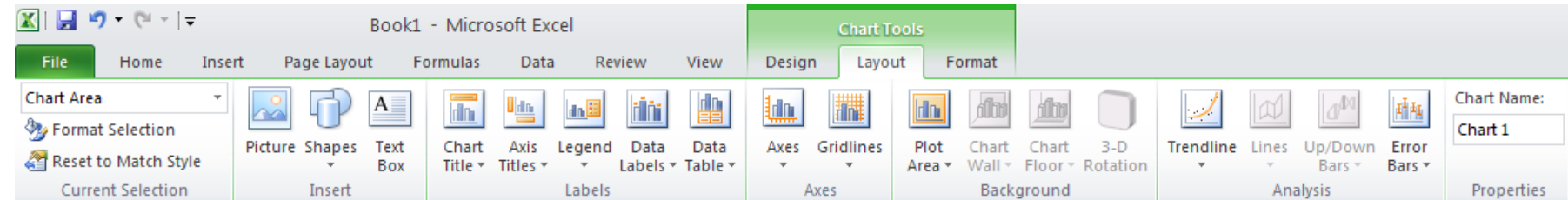
Basic chart types

- **Column**
 - comparing magnitudes across categories (sales by product, by month, etc.)
- **Bar**
 - similar to column, but horizontal
 - useful when you have many categories/long labels
- **Line**
 - showing change over time (trend by months/years, etc.)
- **Pie**
 - showing the breakdown of a whole into parts (percentages by category)



Basic Charts

Chart elements



- Chart Area – the entire chart region
- Plot Area – the area where the columns/lines/pie slices are drawn
- Series – a data series (e.g. “Sold 2024”, “Sold 2025”)
- Category axis (X-axis) – categories (months, products, etc.)
- Value axis (Y-axis) – numeric values
- Legend – explains which color/line represents which series
- Chart Title / Axis Titles – chart title and axis labels

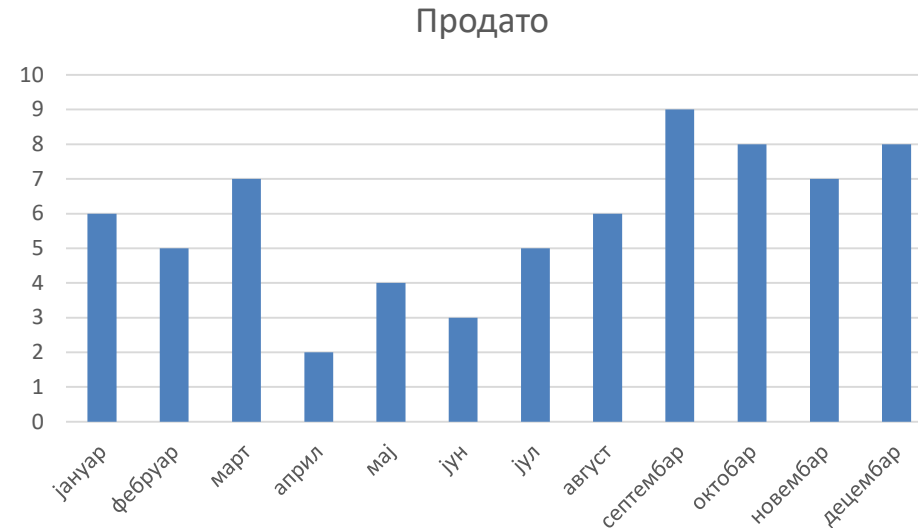


Basic Charts

Column chart

- Select the data range (e.g. A1:B13 – “Month” and “Sold”)
- Tab Insert → group Charts → Column
- Choose type: Clustered Column (basic)
- Excel creates the chart as an embedded object on the same sheet

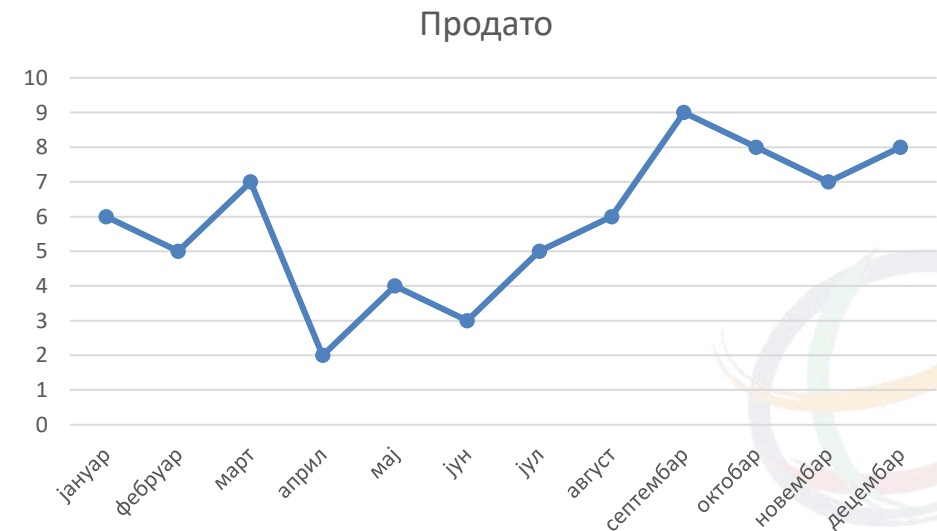
If needed, move the chart (drag & drop) or change its size (handles on the edges)



Basic Charts

Line chart

- Most often used for time-based data (time series)
 - sales by months
 - temperature by days
 - number of students by year of entry
- Steps are similar to the column chart:
- select the range
- Insert → Line
- choose the basic Line chart

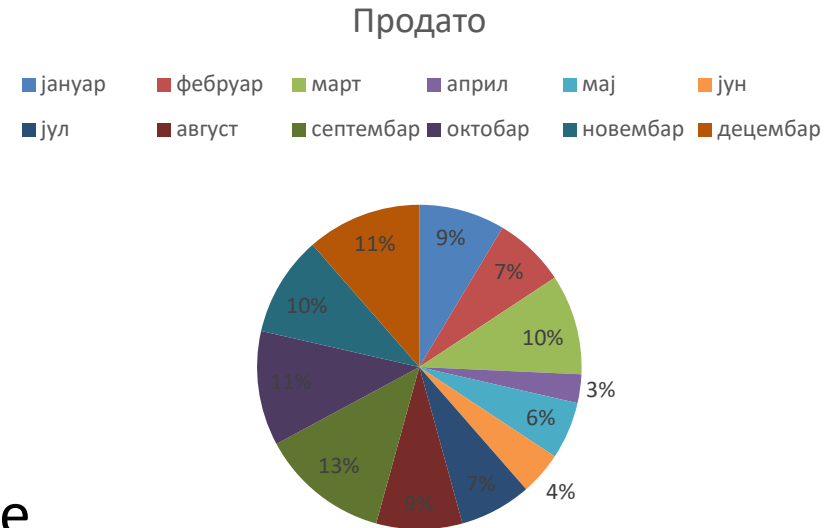


Basic Charts

Pie chart

- Shows the shares (percentages) of parts in a whole
- Suitable when we have a relatively small number of categories (approx. 3–7)
- Steps:
 - select one column with categories and one with numbers
 - Insert → Pie
 - choose the basic Pie

Be sure to add Data Labels (percentages) so the chart is readable



Exercise

Initial table: “*Prodaja*” (“Sales”)

- (columns: item, quantity, total price, ...)

Task:

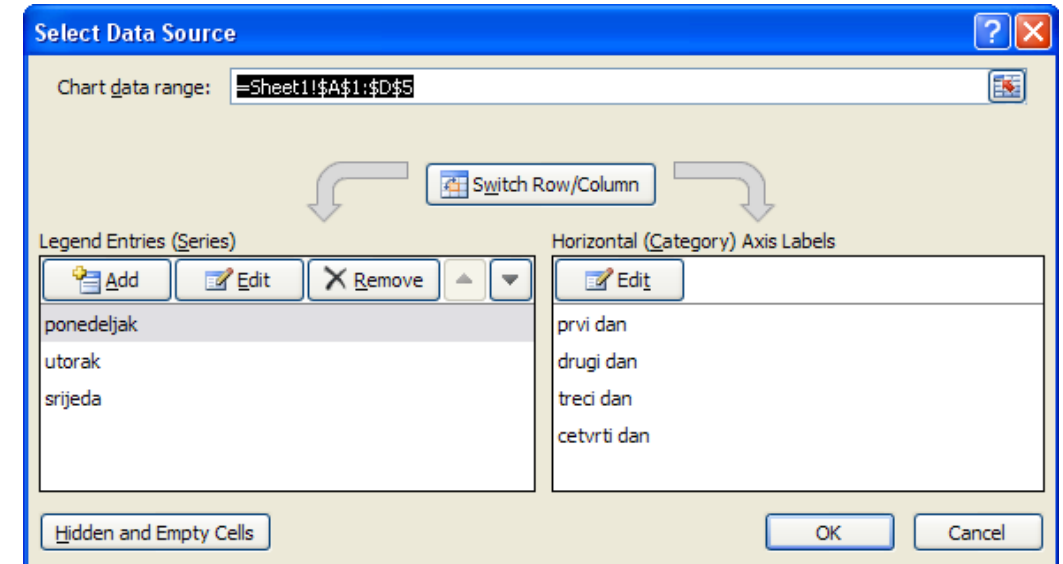
- Create a column chart of quantity by item
 - columns: Item, Quantity
- Create a line chart of total sales by items (if there is a logical order)
- Create a pie chart of each item’s share in total sales
 - use total price and format Data Labels as percentages
- Place the three charts one below the other and compare which one best conveys the sales message



Basic Charts

Select Data

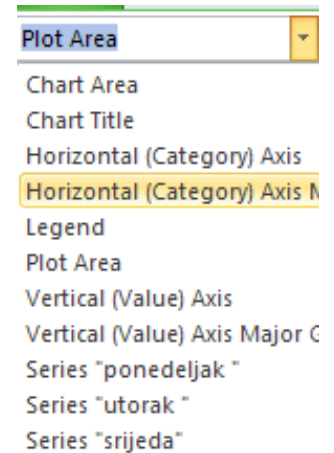
- When the chart is selected:
 - right-click → Select Data...
- You can:
 - change the data range
 - add/remove series
 - change the order of series
 - use Switch Row/Column – swap the role of rows and columns as series/categories



Basic Charts

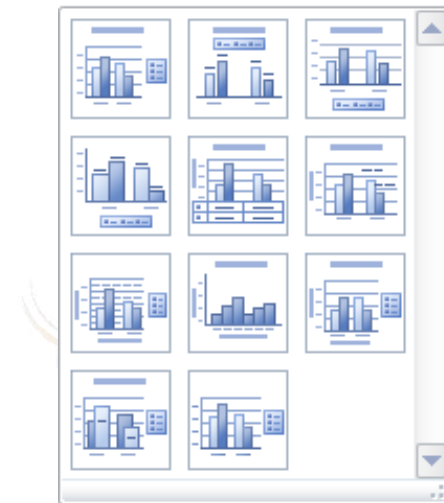
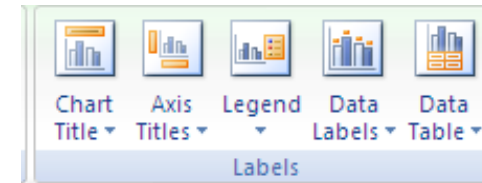
Adding/changing titles and axis labels (Chart Title and Axis Titles)

- When the chart is selected
 - the Chart Tools appear on the Ribbon
 - Design / Layout / Format – depending on the version
- Chart Title
 - button Add Chart Element (or Layout → Chart Title)
 - set a title that clearly describes what the chart shows
- Axis Titles (X and Y)
 - e.g. X-axis: “Month”, Y-axis: “Units Sold”



Basic Charts

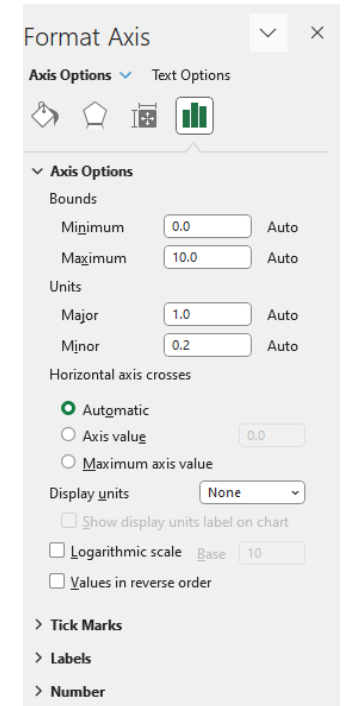
- Legend and Data Labels
- **Legend**
 - shows which color/line belongs to which series
 - can be moved (top, bottom, left, right)
- **Data Labels**
 - show the exact value on a column/line/pie slice
 - useful for pie charts or when we want precise values
- Example:
 - Pie chart – Data Labels = percentage + category name



Basic Charts

Formatting axes (Axis Options)

- Right-click on the axis → Format Axis
- Possible changes
 - Minimum and Maximum (axis range)
 - units (Major/Minor unit)
 - number format (Number – e.g. currency, percentage, no decimals)
 - text angle and alignment
- Examples:
 - scale from 0 to 100 with step 10
 - showing millions (divide values by 1,000,000 and indicate “million” in the Axis Title)



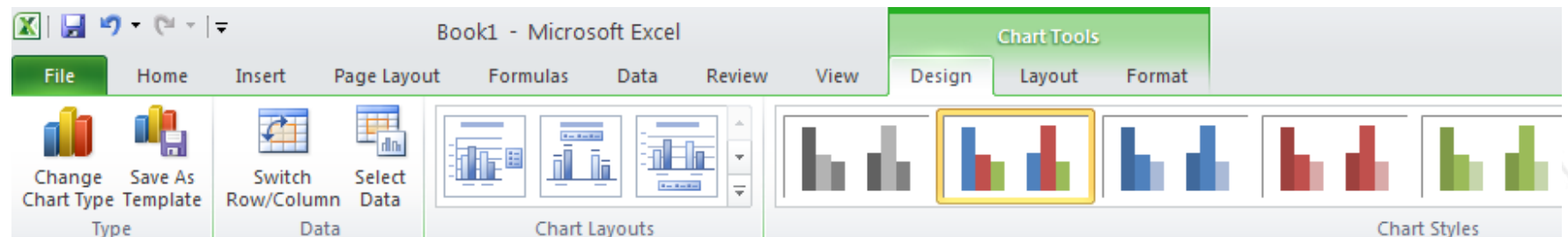
Basic Charts

Chart Styles and Layout

- Chart Styles
 - predefined styles (colors, background, gridlines)
- Layout (Add Chart Element / Quick Layout)
 - quickly add/remove titles, legend, Data Labels, gridlines

- Guidelines

- avoid “overly colorful” styles
- ensure good contrast (so everything is clearly visible on a projector/print)



Basic Charts

Placing charts in the document

- Moving
 - grab the chart with the mouse and drag
- Resizing
 - drag the corners/sides
- Move Chart (right-click → Move Chart...)
- As Object in (on the same sheet, next to the table)
- New Sheet (chart on a separate sheet – “Chart Sheet”)
- Uses
 - a separate Chart Sheet for the “main” report chart
 - embedded charts next to the table for quick checking



Basic Charts

How to choose the right chart type?

- comparing values across categories → Column/Bar
- showing a trend over time → Line
- showing the structure of a whole → Pie



Exercise

Editing charts – starting point: charts from Exercise 1 (“Prodaja”)

Task

- For the column chart:
 - add Chart Title and Axis Titles
 - format the Y-axis to have no decimals
 - change the chart style to one of the suggested Chart Styles
- For the pie chart:
 - add Data Labels that show both category name and percentage
 - move the legend to the bottom/right
- Move one of the charts to a separate Chart Sheet and compare the display



Exercise

Initial table “**Studenti**” (“Students”) (from the lesson on formulas)

Task:

- Create a column or line chart that shows results by students or by tests
- Create a pie chart that shows the distribution of students by status
 - e.g. “Passed” / “Not passed”
- Edit the charts so that they:
 - have meaningful titles and axis labels
 - have clearly visible legends and labels
 - do not contain unnecessary “decorative” elements



Questions & Answers

"Funded by the European Union. Views and opinions expressed are however those of the author(s) only and do not necessarily reflect those of the European Union. Neither the European Union nor the granting authority can be held responsible for them."

Network of centers for regional short study programs in the countries of the Western Balkans

Call: ERASMUS-EDU-2023-CBHE

Project number: 101128813